



**ORIGINAL  
SIXTEEN TO ONE MINE, INC.  
Annual Report 2019**

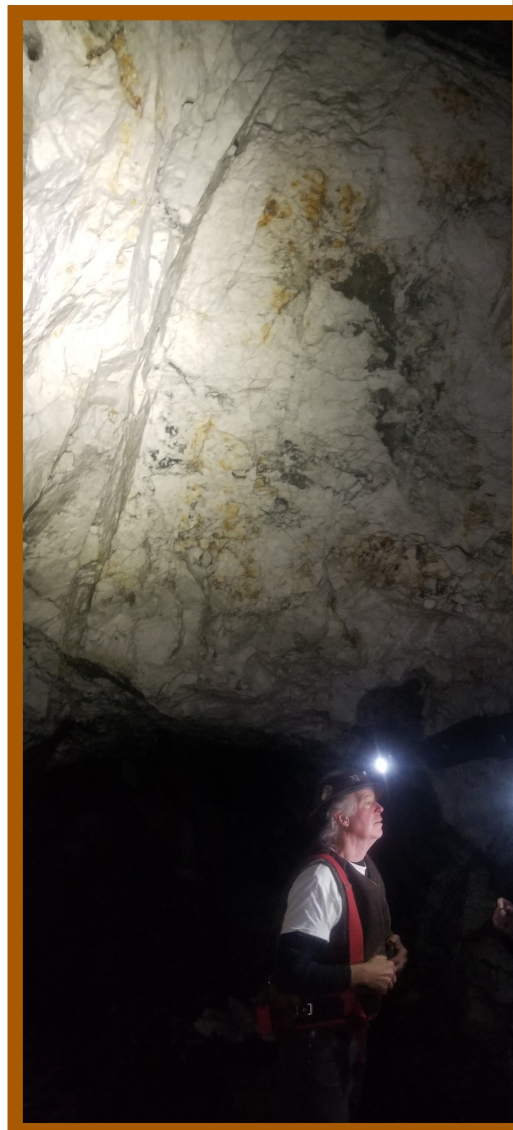


**UPPER LEFT:**  
Over 35 miles of tunnels and levels. More than 300 maps and reports to guide our miners. Utilities include: compressed air and water lines, three-phase electricity, mine and AT&T phone service, and an 18-gauge rail system.

**LOWER LEFT:**  
So much quartz.  
So many choices.  
So little time.



**MIDDLE:**  
This beautiful planetary-looking sphere was cut and polished from a solid block of ironized, banded quartz mined from the depths of the Sixteen to One. Although not apparent in the photo, it's glossy surface also displays flecks of gold and pyrite. It was photographed on the stairs just outside the mine office, accompanied by a thick spray of sweet peas. During the summertime these wildflowers grow all over Alleghany, carpeting the hills and stacked rock walls, many of them dating back to the late 1800s, in dense thickets of pink flowers.



**PUBLIC CORPORATE INFORMATION**

Incorporated under the laws of the State of California, October 9, 1911.  
Capital Authorized: 30,000,000 non-assessable shares of common stock.  
14,390,631 shares outstanding as of December 31, 2019.

**CORPORATE OFFICE**

527 Miners St. - P.O. Box 909  
Alleghany, CA 95910  
(530) 287-3223  
original1621@gmail.com

**TRANSFER AGENT**

Nevada Agency Transfer Company  
50 West Liberty Street, Suite 880  
Reno, NV 89501  
(775) 322-0626

**OFFICERS & DIRECTORS**

**Michael Meister Miller**  
President/Director

**Robert Besso**  
Treasurer/Director

**Hugh Daniel O'Neill III**  
Secretary/Director

**SPECIMEN & JEWELRY SALES**

Gold Sales Division: (530) 287-3540  
goldsales@origsix.com

**WWW.ORIGSIX.COM**

**WWW.ORIGINAL16TO1.COM**

# TABLE OF CONTENTS

President's Annual Message .....	3
Description of Business .....	7
Properties .....	9
Market Information .....	11
Management's Discussion & Analysis .....	11
Directors & Officers .....	13
Balance Sheet .....	15
Statement of Cash Flow .....	16
Notes to Financial Statements .....	16
Notice to MSHA .....	18
The Tightner is a Great Mine .....	19
Jewelry Rock from the Red Star .....	20
Wittkopp to Miller, June 18 <sup>th</sup> 1993 .....	21
Willard P. Fuller .....	23
Wittkopp Release, May 2 <sup>nd</sup> 2003 .....	24
Ahead of the Curve .....	25
High-Grade Pockets .....	26
John Muir Speaks .....	27
The Rainbow Mine .....	28
What's In Its Future .....	29
SWOT.....	31
Map of the Alleghany Mining District.....	32

## Dear Shareholders,

Our annual meeting scheduled for August 29, 2020 is postponed. You must know why! Last March our miners elected to follow State and Federal governments' recommendations regarding social distancing. When California lessens its virus related restrictions, scheduling an underground open house is likely. While mining activities slowed, our goal remains: access the lowest levels of Sixteen to One. Routine maintenance continued in our reduced operational status. See notification to MSHA. We thought we would be back mining by June.

Gold production was modest in 2019. Inventory provided most of the money for expenses. Unsecured loans from a shareholder helped. Unpredictable cash flow always affects our planning. Last year was no exception. We spent more dollars than new gold sacked. The financial statements reflect the results from development work: safe access to the 2400 foot level and pumping the mine. Breaking quartz took a back seat. The crew ignored looking for crumbs. Instead we're heading for targets in the 2400 foot level vein, a sure thing. This is the best plan for achieving the significant successes shareholders and miners want and expect. Past Annual Reports detailed this major project with pictures. Hope you saved them.

Gold is certainly making news as spot price reaches \$2,059.21. The 2019 Annual Report reveals deep background archival information. My intent is to provide readers current and historical data, rarely available to the public. Make copies for friends or strangers. Our Company owns the most proven gold deposit in the world with the fewest working miners: Alleghany Mining District and Sixteen to One mine. Help me change this.

The Company broke ground in the early 1990's with its website. It remains a wealth of history, especially topics on the FORUM (*origsix.com*). Technically speaking it became obsolete, a dinosaur. A new 21<sup>st</sup> century website is up and running (*original16to1.com*). It complements the old one. These sources are yours. I hope you find both websites valuable.

Alleghany has no cell service and only satellite internet, which especially makes Facebook difficult for us to maintain. An associate created a Facebook connection: (*facebook.com/SixteentoOneMine*). Encourage him to keep it going with your participation. Facebook has a place.

Documents contained in our 2019 Annual Report explain what a rare business you and I own. Perhaps people with no gold assets or wishing to expand precious metal holdings will call and investigate our mine. We produce gold and silver from our patented and permitted claims. Reports, correspondences, articles and clear facts highlight a 124 year old mine and its 109 year old operating company. We have a story to tell.

Regards and best wishes,



Michael Meister Miller  
August 17, 2020

## The 1993 Annual Report

In 1976, I attended my first shareholder meeting. The gold rush that began in 1975, when the free market system for gold resumed in the United States was in its early stages. An underground mine like ours attracted a lot of attention. The 1993 year was a pivotal one for us. By the end of September, I understood that the battle for operational survival could no longer dominate our behavior. Survival management, so familiar since 1983, must be replaced by expansive and developmental management.

## 1990 Annual Report

The Sixteen to One vein system is legendary among high grade gold mines. Our company, which has one of the most sensational mines in the world is slowly moving away from its past isolation. It remains hidden to many people and will remain so to those people seeking simple answers to complex gold investment opportunities.

## 1998 Annual Report

"Silver lies in veins, and gold where they find it" is an old saying. Geological history determined by prior mining is a valuable bridge between theory and fact. No gold miner or gold investor can afford to be grouped with charlatans, or classed with cheap retailers of empirical opinions. Our underground headings look great. Our miners are working diligently. Even though, it may be necessary to further cut expenses and scale down our mining. Debt or dilution through the issuance of treasury stock, however, is my preference.

**SECURITIES AND EXCHANGE COMMISSION  
WASHINGTON, D.C. 20549  
FORM 10-K**

ANNUAL REPORT PURSUANT TO SECTION 13 OR 15 (d)  
OF THE SECURITIES EXCHANGE ACT OF 1934

**For the fiscal year ended December 31, 2019**

Commission File No. 001-10156

**ORIGINAL SIXTEEN TO ONE MINE, INC.**

(Exact name of registrant as specified in its charter)

**CALIFORNIA**

(State or other Jurisdiction)

**94-0735390**

(I.R.S. Employer ID#)

**Post Office Box 909, 527 Miners Street, Alleghany, CA 95910**

(Address of principal executive offices.)

**(530) 287-3223**

(Registrant's telephone number, including area code.)

Indicate by check mark if the registrant is a well-known seasoned issuer, as defined in Rule 405 of the Securities Act. Yes  No

Indicate by check mark if the registrant is not required to file reports pursuant to Section 13 or Section 15(d) of the act.  
Yes  No

Indicate by check mark whether the registrant (1) has filed all reports required to be filed by section 13 or 15(d) of the Securities Exchange Act of 1934 during the preceding 12 months (or for such shorter period that the registrant was required to file such reports, and (2) has been subject to such filing requirements for the past 90 days. Yes  No

Indicate by check mark whether the registrant has submitted electronically on its corporate Web site, if any, every Interactive Data File required to be submitted and posted pursuant to Rule 405 of Regulation S-T (232.405 of this chapter) during the preceding 12 months (or for such shorter period that the registrant was required to submit and post such files). Yes  No

Indicate by check mark if disclosure of delinquent filers pursuant to Item 405 of Regulation S-K (229.405 of this chapter) is not contained herein, and will not be contained, to the best of registrant's knowledge, in definitive proxy or information statements incorporated by reference in Part III of this Form 10-K. Yes  No

Indicate by check mark whether the registrant is a large accelerated filer, an accelerated filer, a non-accelerated filer, or a smaller reporting company. See the definitions of "large accelerated filer," "accelerated filer" and "smaller reporting company" in Rule 12b-2 of the Exchange Act.

Large accelerated filer  Accelerated filer

Non-accelerated filer  Smaller reporting company

Indicate by check mark whether the registrant is a shell company (as defined in rule 12b-d of the act).  
Yes  No

**As of December 31, 2019, 14,390,631 shares of Common Stock, par value \$.033 per share, were issued and outstanding.**

## PART I

### GENERAL NOTE

In accordance with directive from the Securities and Exchange Commission (SEC) and Industry Guide 7, reference for all intent and purposes to the Company's employees as miners, its properties as mines or its operation as mining does not diminish the fact that the Company has no proven reserves and is in the "exploration state" as defined in Guide 7(a)(4)(iii); however, the Company continues to produce gold over its 108 years of operating its mines in the Alleghany Mining district. Proceeds from the annual production for 2015 and 2016 realized profitable years. Gold production in 2018 and 2019 was minimal as management directed the crew to begin a tough but significant project December 2016: reestablish the 49 WINZE for mining. Work continued through 2019, as planned. The 49 WINZE, access to the deep levels of the Sixteen was abandoned in 2005. The winze is a vital component for resuming gold production on established gold headings. In addition, safe travel was secured and approved by the federal regulatory agency known as MSHA in the winze, the 1000 foot level and the 1700 foot level. Another primary goal included lowering the water. As of December 31, 2019, the water is 10 feet below the 1900 level.

During 2019, very little time was spent detecting for and mining gold. With one prior profitable year, management decided to place rehabilitation/maintenance ahead of mining for gold. Operating capital came from inventory and recent production, which were sold to preexisting markets. In addition to significant underground improvements, relations with federal and California regulators improved significantly during 2019. California is known for its active environmental perspectives and advocates. Its reputation is global. Significant progress continues towards achieving lawful interpretation of the Porter Cologne Act, the basis of water administration.

Management described its operational goals for 2018 and 2019 in Part I, GENERAL NOTES of this document with details in The Company's Annual Reports for 2017 and 2016 (see our websites). The prior two profitable years provided secured inventory to operate without the need of mining gold. By December of 2018, a conservative decision was made to place the winze, level and pumping heading on hold. The crew would resume mining for gold January 2019, which contributed to inventory.

For travel time and underground efficiency the crew works a four day-ten hour week. During the first quarter 2019, the crew located approximately 40 ounces including the "Hand of Dan", a single 21-ounce specimen. During the second quarter 2019, the crew ceased mining for gold and returned to winze rehabilitation project. Gold without jewelry or specimen value is crushed, melted and sent to a refinery in Southern California. It is sold into the national gold market at the prevailing spot price.

### SUBSEQUENT EVENTS

In 2012, a shareholder approached Michael Miller with his idea *"to develop and apply the latest in sensing and detection technology to enhance the odds of finding gold"*. He was a Silicon Valley promoter capable of hiring engineers to develop new technology in locating gold in quartz veins. The Shareholder wrote *"our development team has over forty years combined experience in all fields of RF technology and is confident it can enhance current detection ability by a considerable margin."*

The Silicon Valley group formed a shell company with a billionaire's money. A contract with the mine was negotiated. This group became a California code violating triumvirate!

The Company's agreement entitled it to use a portion of the mine to develop new technology in locating gold in exchange for a percentage of gold found using their technology. It was unsuccessful, a 100% failure as no gold target was ever identified. Years of our time were lost, including expenses billed to this shell which were unpaid and ignored.

The triumvirate's true plan was a scheme called "loan to own" the mine. The billionaire supplied the money as his partners led us into worthless pursuits underground. The objective, according to a later statement, was to give the Sixteen to One mine to the billionaire. When that didn't work the trio modified its business. Their plans to interfere with the mining operations at the Sixteen to One became more devious. Harassing 16 to 1 miners, putting hidden cameras in the mine, and intimidating key associates until they disassociate themselves from the mine is called "Intentional Interference in a Business Relationship". It worked. I lost a director. Scott didn't need the hassles and knew the triumvirate would continue hoping to bankrupt Original Sixteen to One Mine, Inc. Our shareholders and I lost time and money but we repaid a \$500,000 loan. Nevertheless, the interferences continue.

The trio contacted government mining regulating agencies (Central Valley Water Board, MSHA, etc.), local law enforcements and Sixteen to One shareholders with bogus accusations to draw negative attention to the mine and its operations.

Last October (2019) our property found itself under siege by County, State, and Federal government bureaucrats. The triumvirate had secured two former disgruntled employees guilty of violating serious Company policies to file an affidavit that 1000 gallons of oil was buried near Kanaka Creek.

The regulators, some armed with pistols and rifles (about 50 of them all told), spent a week occupying the property, excluding our miners from entering.



Neither the Company nor I authorized the placement of toxic material in a pit prepared for a small amount of worthless metal. Kanaka Creek is about three football fields away from the pit. Personal garbage (not ours) and small amount of some liquids were placed in the pit by these ex-employees.

### **Judicial Event**

Nine months later in June 2020, the Company and I were cited for four pollution criminal violations. We are defending this injustice. These are bad actors with deep pockets and will stop at nothing to trash my credibility and take over our beloved mine. It is my responsibility to shareholders to protect and promote the rich history of the mine, our town and the California Gold Rush era, which continued for 30+ years. Of course, we are looking for gold. If these dirty birds win, say good bye to the last real authentic gold mining operation in California and, just as important, any opportunity for kids and young adults to experience what it was like in those golden days of yesteryear.

## ITEM 1: BUSINESS

### DESCRIPTION OF BUSINESS

**Original Sixteen to One Mine, Inc.** (the Company) was incorporated in 1911, in California. It mines gold on properties it owns under fee simple grant deeds. The Alleghany Mining District is about 65 miles northeast of the intersection of I-80 and California State Route 49.

Sixteen to One mine from which more than 1,113,266 troy ounces of gold have been retrieved is the primary operation. It is a traditional hard rock underground mine where miners create horizontal levels at various elevations and raise into favorable areas. Geology of the mineral deposit is well documented. Gold is not distributed evenly within the quartz veins; however, concentrations of gold deposits are found scattered within these quartz veins, in recognized ore shoots. Because the gold appears intermittently, the Company has never declared reserves according to contemporary industry standards.

Operations are characterized by significant amounts of preparation, tunneling, underground maintenance and upgrading. The Company from time to time focuses substantially all of its resources on infrastructure development or maintenance. During these periods little gold is mined. At other times, miners are primarily exploring for gold. Accordingly, business is subjected to very different cycles: one dependent on whether the Company is directing its resources towards infrastructure or underground development and the other is gold production. The operation resembles the classical "boom or bust" cycles regardless of outside influences.

Metal detection technology enables exploration to detect gold from zero to 48 inches from quartz faces in the wall rock. (The size of the concentration is a factor). Advancement in off the shelf metal detection technology has steadily progressed over the past twenty years.

Greater sensitivity in detectors has historically increased gold production throughout the mine. It is impossible to predict when new devices will be developed. Twenty-first century detection skills have yet to find the Sixteen to One.

For accounting purposes gold revenues are accrued when the metal is recovered. For tax purposes revenues are not recognized until the gold is sold. Rare high-grade gold and quartz is sold at a premium to museums, collectors and jewelry manufacturers. This market is a significant financial factor with revenue significantly greater than prevailing spot price. Demand for the Sixteen to One gold quartz gemstone is greater than the amount mined. The Company lacks sufficient funds to implement its long-term construction projects: sinking a new shaft in the center of the property is a long-standing objective. Other Company projects are: joining a public stock exchange, building and testing a gold detector specifically designed for the Sixteen to One vein and dewatering the entire mine. Supplies and equipment used for underground exploration are commonly available. Labor requirements are available but are a concern throughout the mining industry.

No particular seasonality exists for the marketing of gold. Adverse effects of winter storms sometimes limit the ability of the crew to access the mine. Management believes it is in substantial compliance with all applicable federal, state and local laws and regulations relating to the environment. The Company does not presently anticipate any material capital expenditures for environmental control facilities, either for the remainder of its current fiscal year or for the succeeding fiscal year.

## ITEM 1A RISK FACTORS

### (a) Price of Gold

The daily spot price of gold has a modest effect on gross revenue if it's between \$1,000 and \$1,300 an ounce. A significant drop below \$1,000 may have an adverse effect on the Company's operation. Closing spot price on December 31 2019 was \$1,520. The Company's realized gold values usually exceed the bullion price due to the jewelry and specimen markets which are not affected by the spot price of gold.

### (b) Lack of Proven Reserves

Because proven reserves are not utilized as a component for evaluating future earnings or ore values, a sense of uncertainty of existence is perceived by some. Caution is recommended in using the doctrines of reserves as an economic tool for valuing the Sixteen to One mine. While (i) the Company has recovered over one million ounces of gold and (ii) management knows that substantial additional virgin veins exists in the Sixteen to One mine, the Company has no ability to measure potential gold production using the mathematical tools generally recognized in the mining industry; however, the company can prove that approximately seventy percent (70%) of its vein systems have not been developed.

### (c) Governmental Regulation

The attached financial statements have not been audited by a Securities Exchange Commission (SEC) accounting firm. Therefore, the Company is not in full compliance with this SEC regulation for companies listed on an exchange.

Mining is generally subjected to regulation. State and federal statutes regulate environmental quality, safety, exploration procedures, reclamation, employee's health and safety, use of explosives, air quality standards, pollution of stream and fresh water sources, noxious odors, noise, dust, and other environmental protection controls as well as the rights of adjoining property owners. Laws may change preventing or delaying the commencement or continuance of given operations.

The Company is substantially in compliance with all known safety and environmental standards and regulations; however, has faced reoccurring unreasonable and unlawful demands from the Central Valley Regional Water Quality Control Board (CVRWCB) or its staff. The Company is forced to expend working capital and time defending excessive and punitive behavior. There can be no assurance that future changes in the laws, regulations or reckless interpretations will not have a material adverse effect. During 2018, CVRWCB staff was invited and accepted invitations to visit the mine property. Ongoing discussions during 2019 improved the requirements for our recently renewed 5-year discharge permit.

### (d) Liquidity

Gold inventory at December 31, 2019, was \$306,691 primarily as specimens or gold held as jewelry. While history of actual cash sales supports an inventory value exceeding the spot price, no such increases are used to compute the inventory. All inventory of raw material is recorded at spot price per troy ounce. In addition, contract manufacturing costs of jewelry are included in the finished jewelry inventory. Periodic shortfalls in liquidity occur which are not likely to be bridged by institutional debt financing. Management addresses these issues as they arise.

### (e) Price of Stock

Bids and offers are publicly recorded on the stock page of the Company's web site. Exposure is limited. The price of stock may not accurately reflect its fair market value because of the limited marketplace and the existence of a wild and free Gray Market. The company maintains no program to support or promote its stock and is unlikely to conduct a program until a public marketplace is secured.

There are conflicting bids, offers and trades between the Company's website and the unregulated Pink Sheet Gray Market, ticker symbol OSTO. Because of these discrepancies the market price is unpredictable.

## ITEM 2: PROPERTIES

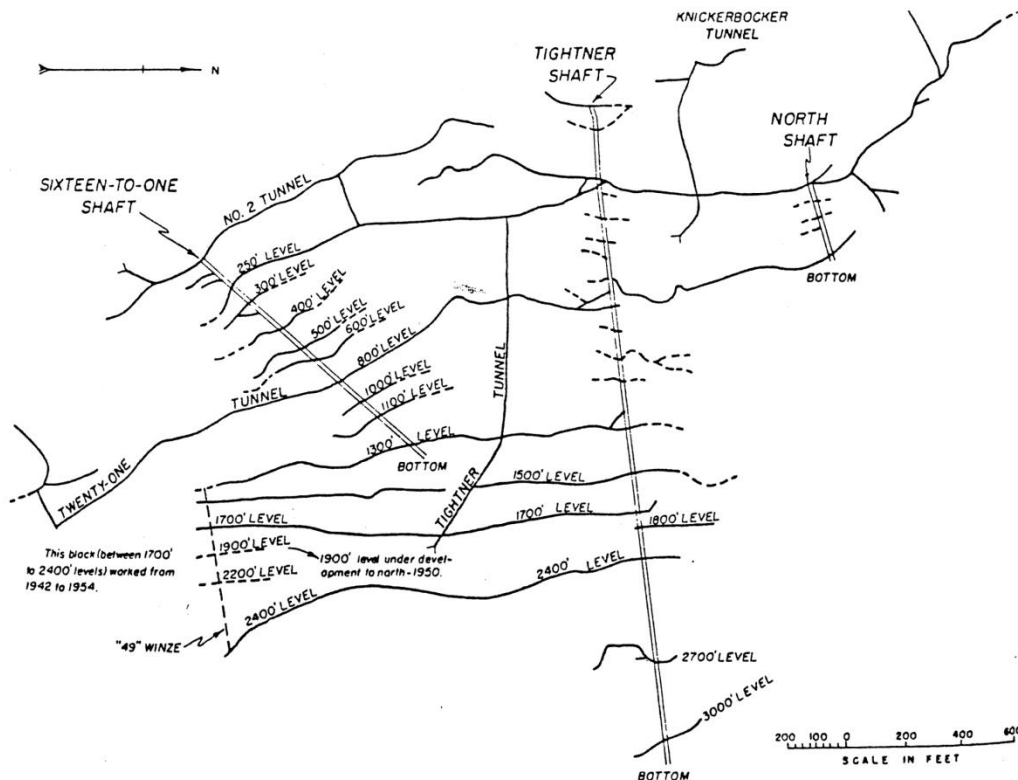
### Properties

The Sixteen to One Mine was incorporated into Original Sixteen to One Mine, Inc. in 1911. Properties acquired prior to 1925 are carried on the Company's books at their original purchase price and are fully amortized through depletion.

In 1999, the Company acquired the Plumbago mine in the Alleghany Mining District, which is located approximately two miles southeast of the Sixteen to One mine. The property includes a twenty-acre patented claim, mineral rights to eight patented claims and sixteen unpatented claims. Approximately \$425,000 was spent opening the main adit to the Plumbago shaft. The property has a history of rich gold production. The Company will pursue the potential within this property when funding becomes available for exploration and development.

On June 22, 2005, the Company acquired the mineral rights to fourteen claims, the patent rights to one claim and the mill of the Gold Crown mine, adjacent to the Sixteen to One Mine. The Board of Directors decided that it is a long-term investment and important to the long-term welfare of the Company. No depletion has been applied to the Gold Crown or Plumbago properties.

The Alleghany properties consist of 26 patented claims (470 acres), 160 acres of mineral rights on patented claims and approximately 320 acres of unpatented claims. The following table sets forth further information with respect to the Company's mining claims.



**PATENTED MINING CLAIMS OWNED  
100% BY THE COMPANY**

<u>NAME OF CLAIM</u>	<u>NAME OF CLAIM</u>
Belmont	Farnham Gold Quartz Mine
Belmont #2	Alene
Rainbow Fraction	Hanley Quartz Mine
Rainbow Extension	Noble
Twenty One	Sixteen to One
Eclipse Quartz	Groves Gold Quartz Mine
Eclipse Extension	Denver
Tightner Extension	Happy Jack
Contract	Happy Jack Extension
Contract Extension	Ophir
Valentine	Number Three
Red Star	Marion Lode
Bartlett	Sphoon

**MINERAL RIGHTS – PATENTED CLAIMS**

<u>NAME OF CLAIM</u>	<u>NAME OF CLAIM</u>
Standard Lode	Plumbago Mine Mill Site
Standard Lode Extension	Clute Lode
Gold Beater Lode	Crafts Lode
Hope Extension Lode	Enterprise Quartz

**UNPATENTED  
CLAIMS**

<u>NAME OF CLAIM</u>	<u>NAME OF CLAIM</u>
Alice	Wonder #1
Alice Annex	Wonder #2
General Sherman N. Ext	Wonder Goldmines MS
Right Place	No Better
No Better Extension	Tightner #2 Lode
Tightner #3 Lode	Tightner #4 Lode
Tightner #5 Lode	Tightner #6 Lode
Alene Ext. Quartz	Bartlett Ext. Quartz
Illocana Quartz	East Bartlett Lode
Bal Quartz	Jumbo

**ITEM 3: LEGAL PROCEEDINGS**

See “Subsequent Events” on page 5.

**ITEM 4 MINE SAFETY DISCLOSURES**

For the twelve-month period ended December 31, 2019 a total of 8 citations were issued with a total assessed value of \$1,976. The 8 citations included 1 104(a) S&S citation and no 104(b) orders.

## PART II

### ITEM 5: MARKET FOR THE REGISTRANT'S COMMON EQUITY AND RELATED STOCKHOLDER MATTERS

#### Market Information

Currently there is no public marketplace for the Company's common stock. Data from 2013 through 2017 is based upon activity on the X-Mart posted on the Company's web-site.

	1 <sup>st</sup> Quarter		2 <sup>nd</sup> Quarter		3 <sup>rd</sup> Quarter		4 <sup>th</sup> Quarter	
	High	Low	High	Low	High	Low	High	Low
<b>2019</b>	NO TRADES ON XSMART FOR 2019							
<b>2018</b>	NO TRADES ON XSMART FOR 2018							
<b>2017</b>	.52	.52	*	*	.49	.49	.49	.49
<b>2016</b>	*	*	*	*	*	*	.52	.52
<b>2015</b>	*	*	.44	.44	.56	.56	*	*
<b>2014</b>	*	*	.46	.54	*	*	.42	.42
<b>2013</b>	.89	.89	.86	.65	*	*	*	*
<b>2012</b>	.49	.49	.49	.49	*	*	*	*
<b>2011</b>	*	*	.55	.55	*	*	*	*
<b>2010</b>	*	*	.89	.45	*	*	.55	.50

\* No trades took place on the Company website in these quarters.

### ITEM 6: MANAGEMENT'S DISCUSSION AND ANALYSIS OF FINANCIAL CONDITION AND RESULTS OF OPERATION

#### Balance Sheet

Original Sixteen to One Mine, Inc. is a distinct company in that it is the only operating company of its kind remaining in the United States. Management knows the assets of the Company are understated due to the age of acquisition. Exploration and development expenses are not capitalized. The Company celebrated its 100-year anniversary on Oct. 9, 2011. It is the oldest gold mining corporation in the United States. Gold inventory is recorded at spot price despite proven additional value for specimen and gem-stone material which is substantially greater than spot price. Jewelry inventory is recorded at labor plus gold cost.

No value is recorded on the balance sheet for timber. The company owns 470 acres of prime forested timberland.

No value is recorded on the balance sheet for the Company owned water-rights. Reduced value is recorded on the balance sheet for buildings, equipment and land. No value is recorded on the balance sheet for marketable aggregate and decorative stone currently stockpiled. No value is recorded on the balance sheet for goodwill. Fixed assets are recorded at historic cost less depreciation.

#### (A) 2018 versus 2019.

#### Balance Sheet Comparisons

##### Assets

For the one-year period ended December 31, 2019, compared to the one-year period ended December 31, 2018, cash increased by \$1,137 (34%) due to cash flow variations. Accounts receivable decreased by \$11,651 (17%).

For the one-year period ended December 31, 2019, compared to the one-year period ended December 31, 2018 inventory decreased by \$122,638 (29%) due to changes in mining objectives in 2019 and sales of inventory to fund operations.

For the one-year period ended December 31, 2019, compared to the one-year period ended December 31, 2018 equipment increased by \$3,450 due to the purchase of a pump.

## ***Liabilities***

For the one-year period ended December 31, 2019, compared to the one-year period ended December 31, 2018 accounts payable increased by \$29,271 as the company relied on credit to finance the operation.

For the one-year period ended December 31, 2019, compared to the one-year period ended December 31, 2018 notes due related parties increased by \$9,411 (4%) due to a combination of additional loans and interest expense.

For the one-year period ended December 31, 2018, compared to the one-year period ended December 31, 2017 long-term notes decreased by \$9,231 (8%) as a result of scheduled payments with no new loans taken out.

## **ITEM 7A: QUANTITATIVE AND QUALITATIVE DISCLOSURES ABOUT MARKET RISK**

From time to time the Original Sixteen to One Mine, Inc. (the Company), will make written and oral forward-looking statements about matters that involve risks and uncertainties that could cause actual results to differ materially from projected results. Important factors that could cause actual results to differ materially include, among others:

- Fluctuations in the market prices of gold.
- General domestic and international economic and political conditions.
- Unexpected geological conditions or rock stability conditions resulting in cave-ins, flooding, rock-bursts or rock slides.
- Difficulties associated with managing complex operations in remote areas.

- Unanticipated milling and other processing problems.
- The speculative nature of mineral exploration.
- Environmental risks.
- Changes in laws and government regulations, including those relating to taxes and the environment.
- The availability and timing of receipt of necessary governmental permits and approval relating to operations, expansion of operations, and financing of operations.
- Fluctuations in interest rates and other adverse financial market conditions.
- Other unanticipated difficulties in obtaining necessary financing with specifications or expectations.
- Labor relations.
- Accidents.
- Unusual weather or operating conditions.
- Force majeure events.
- Other risk factors described from time to time in the Original Sixteen to One Mine, Inc., filings with the Securities and Exchange Commission

Many of these factors are beyond the Company's ability to control or predict. Investors are cautioned not to place undue reliance on forward-looking statements. The Company disclaims any intent or obligation to update its forward-looking statements, whether as a result of receiving new information, the occurrence of future events or otherwise.

## **ITEM 8: CONTROLS AND PROCEDURES**

Security procedures include multiple levels of gold custody, from the mine to sales. Inventory control procedures were set up by an SEC certified auditing firm and continue to be followed.

### PART III

#### ITEM 9: DIRECTORS AND EXECUTIVE OFFICERS OF REGISTRANT

The following table sets forth the Officers and Directors of the Company. The directors listed below will serve until the next annual shareholders meeting to be held on August 31, 2019. All of the officers of the Company serve at the pleasure of the Board of Directors.

##### *Officers and Directors*

Name	Age	Position	Officer Since	Director Since
Michael M. Miller	78	President & Director	1983	1977
Hugh Dan O'Neill	78	Secretary & Director	2016	2002
Robert Beso	69	Treasurer & Director	2016	2016

##### Michael M. Miller

##### *Director, President and CEO*

As President and Chief Executive Officer, Mr. Miller is responsible for the day-to-day operations of the Company. In 1975, Mr. Miller became the sole proprietor of Morning Glory Gold Mines. Prior to that, he was self-employed in Santa Barbara County, California from 1965 to 1974. Mr. Miller served as a trustee and President of the Sierra County Board of Education (1979 to 1983 trustee) (President in 1983). In 1991 he was appointed a member of the Sierra County Planning Commission (Chairman in 1992, 1993, 1999 and 2000) until 2001. Mr. Miller is licensed as a California Class A general engineering contractor. He was a member of the American Institute of Mining Engineers. In 1965, Mr. Miller received a B.A. from the University of California at Santa Barbara in combined Social Sciences-Economics. He was born in Sacramento, California.

##### Hugh Daniel O'Neill III

##### *Director & Secretary*

Mr. O'Neill was born April 21, 1942 at a naval base in Virginia. He was raised in seventeen states over a fourteen-year period, settling in Nevada City, California. He attended the University of San Francisco, where he created Odd Bodkins in 1961. The San Francisco Chronicle syndicated Odd Bodkins in 1963 making Mr. O'Neill the youngest cartoonist ever hired by a national syndicate.

It was published in 350 newspapers. At its peak readership was 50 million daily. Dan is an historian, an accomplished journalist and a former War Correspondent.

##### Robert Beso

##### *Director & Treasurer*

Robert John Besso was born in Sacramento. Just out of high school, he drew draft # 32 but joined the US Army 101st Airborne Division where he was assigned to tanks. Once in Vietnam he was promoted to Sargent at age 19 and took POINT for nine months. In 1971 he was decorated with two bronze stars (combat infantry badges): oak leaf cluster and V for valor. He earned Soldier of the Month and was the personal body guard for Officer Coast. He declined the offer to continue his military career at West Point and almost died from malaria. He returned to California attending American River College and El Camino College. Robert decided to cut hair which he has done for thirty-eight years. He has continued to serve our country with 25 years working with Alcoholics Anonymous, Jail and Prison inmates, Boys Ranch and Teen Substance addiction groups. He has and continues to take "point" to protect the things that he values. "Like farmers and ranchers, the miners have value. The Sixteen to One is a reality and will work to reduce the ignorance about mining."

Name/Principal Position	Annual Year	Salary	Bonus	Securities
Michael M. Miller President and CEO	2019	\$ 60,000	0	0
	2018	\$ 60,000	0	0
	2017	\$ 60,000	0	0

## PART IV

### ITEM 12: UNAUDITED FINANCIAL STATEMENTS

In the opinion of management, the financial statements contain all adjustments (consisting only of normal recurring accruals) necessary to present fairly the Company's financial position at December 31, 2019 and December 31, 2018, the results of operations and cash flows for the twelve-month periods ended December 30, 2019, 2018 and 2017. The unaudited financial statements have been prepared in accordance with Generally Accepted Accounting Principles.

#### SIGNATURES

Pursuant to the requirements of Section 13 or 15(d) of the Securities Exchange Act of 1934, the registrant has duly caused this Annual Report to be signed on its behalf by the undersigned, thereunto duly authorized.

ORIGINAL SIXTEEN TO ONE  
MINE, INC.  
Registrant

By:



Michael M. Miller  
President and Director  
Date August 20, 2020

Title of Class	Name & Address of Beneficial Owner	Amount	% of Class
Common	<u>Michael M. Miller</u> PO Box 941 Alleghany CA, 95910	2,123,597	15%
Common	<u>M. Blair Hull</u> Hull Trading Co. 401 So. LaSalle, Ste. 505 Chicago, IL 60605	1,962,822	14%
Common	<u>Kathy N. Hull</u> 11 Sierra Ave. Piedmont, CA 94611	1,490,250	10%
Common	<u>Charles I. Brown</u> Family Partnership LTD PO Bix 1835 Edwards, CO 81632	833,668	6%
Common	<u>Hugh Daniel O'Neill</u> 227 Prospect St. Nevada City, CA 95959	143,077	1%
Common	<u>Robert Beso</u> PO Box 909 Alleghany, CA 95910	7,500	0.01%
Common	All Officers & Directors (as a group)	2,274,174	16%

### ITEM 10: CERTAIN RELATIONSHIPS AND RELATED TRANSACTIONS

See notes to financial statements.

### ITEM 11: PRINCIPLE ACCOUNTING FEES AND SERVICES

Due to monetary constraints, the Company has not hired a SEC certified CPA firm for several years. Most accounting functions are performed by the Company in-house with the exception of the depreciation schedule and tax returns which are handled by outside CPA firms.

**Original Sixteen to One Mine, Inc.  
Condensed Balance Sheet**

**December 31, 2019 & December 31, 2018**

	2019	2018
<b>CURRENT ASSETS</b>		\$
<i>Cash</i>	4,433	3,296
<i>Accounts Receivable</i>	55,524	67,175
<i>Inventory (see Note 1)</i>	306,691	429,329
<i>Other Current Assets</i>	-	-
<b>Total Current Assets</b>	<b><u>366,648</u></b>	<b><u>499,800</u></b>
<b><u>Mining Property</u></b>		
<i>Real Estate &amp; Property Rights, Net Depletion of \$524,145</i>	230,401	230,401
<i>Mineral Property</i>	47,976	47,976
<b>Total Mining Property (see Note 2)</b>	<b><u>278,377</u></b>	<b><u>278,377</u></b>
<b><u>Fixed Assets at Cost</u></b>		
<i>Equipment</i>	597,602	594,152
<i>Buildings</i>	209,487	209,487
<i>Vehicles</i>	168,925	168,925
<b>Total Fixed Assets at Cost</b>	<b><u>927,961</u></b>	<b><u>972,564</u></b>
<i>Less Accumulated Depreciation</i>	(927,961)	(909,387)
<b>Net Fixed Assets</b>	<b><u>47,053</u></b>	<b><u>63,177</u></b>
<b><u>Other Assets</u></b>		
<i>Bonds &amp; Misc. Deposits</i>	14,869	21,460
<b>Total Assets</b>	<b><u>\$707,947</u></b>	<b><u>\$862,814</u></b>

	2019	2018
<b>CURRENT LIABILITIES</b>		\$
<i>Accounts Payable &amp; Accrued Expenses (see Note 3)</i>	1,341,718	1,274,559
<i>Due to Related Party (see Note 4)</i>	238,883	229,472
<i>Notes Payable Short Term (see Note 6)</i>	538,558	538,558
<b>Total Current Liabilities</b>	<b><u>2,119,187</u></b>	<b><u>2,042,589</u></b>
<b><u>Long Term Liabilities</u></b>		
<i>Notes Payable due after one Year (see Note 7)</i>	101,092	110,323
<b>Total Liabilities</b>	<b><u>2,20,279</u></b>	<b><u>2,152,912</u></b>
<b><u>Stockholders' Equity</u></b>		
<i>Capital Stock, Par Value \$0.033: 30,000,000 shares authorized: 14,390,631 issued and outstanding as of 12/31/19 and 14,342,097 as of 12/31/18. (see Note 8)</i>	471,688	473,289
<i>Additional paid-in Capital</i>	2,222,892	2,222,892
<i>Accumulated Deficit and Retained Earnings</i>	(3,986,279)	(3,986,279)
<b>Total Stockholders' Equity</b>	<b>(220,332)</b>	<b>(1,290,098)</b>
<b>Total Liabilities &amp; Stockholders' Equity</b>	<b><u>\$ 707,947</u></b>	<b><u>\$ 862,814</u></b>

**Original Sixteen to One Mine, Inc.**  
**Statement of Cash Flow**  
**December 31, 2019 & December 31, 2018**

	2019	2018
<u>Cash Flows from Operating Activities</u>	\$	\$
Net Profit (loss)	(220,332)	(359,736)
<u>Operating Activities</u>		
<i>Depreciation and Amortization</i>	21,714	25,371
<i>Decrease (increase) in Accounts Receivable</i>	10,651	12,742
<i>Decrease (increase) in Inventory</i>	123,639	222,899
<i>(Decrease) Increase in Accounts Payable Accrued Expenses</i>	60,559	77,533
<i>(Decrease) Increase in related party loans</i>	9,440	28,590
<i>(Decrease) Increase in Short-Term Notes</i>	-	1,282
Net Cash (used) provided by Operating Activities	<b>5,671</b>	<b>8,681</b>
<u>Cash Flows from Investing Activities</u>		
<i>Sale (Purchase) of Real Estate</i>	-	-
<i>(Purchase) Sale of Fixed Assets</i>	-	596
<i>Other Assets, Bonds, Misc. Deposits</i>	-	-
Net Cash (used) provided by Investing Activities	-	<b>596</b>
<u>Cash Flows from Financing Activities</u>		
<i>Increase (decrease) Notes Payable</i>	(9,231)	(17,420)
<i>Proceeds from Sale of Common Stock</i>	(1,602)	4,453
<i>Paid in Capital from Shareholders</i>	-	-
Net Cash Provided (used) by Financing Activities	(10,833)	(12,967)
(Decrease) increase in Cash	1,137	(3,690)
Cash, Beginning of Period	3,296	6,986
Cash, End of Period	<b><u>4,433</u></b>	<b><u>3,296</u></b>

**NOTES TO THE FINANCIAL STATEMENTS**

**1. SUMMARY OF SIGNIFICANT ACCOUNTING POLICIES**

**Nature of Business:**

Original Sixteen to One Mine, Inc. (the Company) was incorporated in 1911 and is actively involved in operating a gold mine in Alleghany, California. In accordance with directive from the Securities and Exchange Commission (SEC) and Industry Guide 7, reference for all intent and purposes to the Company's employees as miners, its properties as mines or its operation as mining does not diminish the fact that the Company has no proven reserves and is in the "exploration state" as defined in Guide 7(a)(4)(iii).

**Inventory:**

Inventory consists of gold bullion, specimens and jewelry. Gold bullion and specimens are quoted at the market price for gold bullion. Jewelry is quoted at the market price for the gold content plus labor cost. Inventory is accounted for using the Average Cost method due to the limitations of the Company's accounting software. Valuation adjustments to account for changes in the price of gold are made quarterly.

**Fixed Assets:** Fixed assets are stated at historical cost. Depreciation is calculated using straight-line and accelerated methods over the following useful lives: Vehicles 3 to 5 years, Equipment 5 to 7 years, Buildings 18 to 31.5 years.

**Depletion Policy:** Because of the geological formation in the Alleghany Mining District, estimates of ore reserves cannot be calculated. Accordingly, a cost per unit depletion factor cannot be determined. Should estimates of ore reserves become available, the units of production method of depletion will be used. Until such time, no depletion deduction will be recorded.

**Revenue Recognition:** As it is mined, gold is recorded in inventory and revenue is recognized using quoted market prices for gold. For income tax purposes revenues are not recognized until the gold is sold.

**Use of Estimates:** The preparation of financial statements in conformity with generally accepted accounting principles requires management to make estimates and assumptions. These estimates and assumptions affect the reported amounts of assets and liabilities at the date of the financial statements and the reported amounts of revenues and expenses during the reporting period. Actual results could differ from these estimates.

## 2. PROPERTY

The company's original property is carried at the 1924 value of \$628,662 and has been fully amortized through depletion charges of \$524,145. Other properties included in the "real estate and property rights" category are a lot purchased in 1984 for \$1,000, Surface rights purchased at the townsite auction in 1996 for \$76,574 and \$48,310 for the Sphoon Mine which is patented property included with the purchase of the Gold Crown Mine in 2005. The category "mineral property" includes the Plumbago Mine which was exchanged for 50,000 shares of restricted stock in 1999.

## 3. ACCOUNTS PAYABLE & ACCRUED EXPENSES

Accounts payable and accrued expenses was \$1,274,559 at December 31, 2018. This balance includes \$783,782 in accrued wages owed to Michael Miller. Mr. Miller's salary has been mostly accrued (not paid) for over ten years and is secured with real estate.

## 4. NOTES PAYABLE RELATED PARTIES

Notes payable related parties at December 31, 2019 of \$238,883 consists of a loan from a shareholder in the amount of \$203,458 secured by gold and \$35,425 owed to Michael Miller.

## 5. RELATED PARTY TRANSACTIONS

None

## 6. NOTES PAYABLE SHORT-TERM

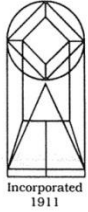
Notes payable short-term of \$538,558 at December 31, 2019 consists of a \$500,000 interest-free line of credit as well as accrued interest on a previous loan. There is no specific due date on these loans which are convertible to stock at \$1.00 per share.

## 7. NOTES PAYABLE

Notes payable due after one-year totaling \$101,092 consists of the balance remaining on the mortgage for the Gold Crown Mine of \$97,236 as well as \$3,856 remaining on a note secured in 2014 for the purchase of a vehicle.

## 8. STOCK

**Capital authorized:** 30,000,000 non-assessable shares of common stock, par value \$.033. Issued and outstanding: 14,390,631 shares of common stock. With approx. 3 Million of the total restricted. Restricted common stock cannot be sold within two years of the issuance date. After the required holding period, the shareholder can take steps to remove the indicated restriction.



## **ORIGINAL SIXTEEN to ONE MINE, Inc.**

"100 Years of Gold"

Post Office Box 909 • Alleghany, California 95910  
(530) 287-3223 • [www.origsix.com](http://www.origsix.com)

MSHAA Western District Office  
James Peck, District Manager  
991 Nut Tree Road  
Vacaville, CA 95687

Dear James Peck,

Please take notice that the Sixteen to One mine operation is suspended. Last date of employment was March 13, 2020. All recognize the positions stated and sought by President Trump with his administration and Governor Newsom with his administration. We support them. It is impossible for our crew to maintain the distance between them and perform as a miner. We join the soldiers who fight to beat this enemy.

I am impressed with my fellow Californians' behavior in public in our region. I am very proud of my fellow Californians' approach to this life-threatening virus. The danger potential seems to change daily; however our crew will wait it out and win this war. We realize the battle may last until June.

A hard copy of this letter will be posted to the district office today as well as this email to you. Regards, our crew wants your crew to be as safe and careful as we pledged to be for us.

Michael M. Miller

April 8, 2020

Cc: Troy Van Wey

## THE TIGHTNER IS A GREAT MINE

**JUN. 22, 1911**

**Recent ore shipment brings large returns. Woodbury's Red Star also is in the running. W.H. Bourns income is one thousand daily.**

Alleghany (cal.) Jun. 20, the recent rich shipment of ore, amounting to 1200 pounds, pulled from Tightner mine Yielded the owners \$75,000 in fine gold and 400 ounces of concentrates valued at \$12 per ounce, making a total of \$79,000. This ore was extracted in the course of developing the main vein in the lower adit, and was not taken out with the purpose of showing the richness of the mine. At this rate a ton of Tightner ore would yield about \$130,000. The ore was treated at the Red Star mill and the concentrates sent to Selby's. More rich quartz is being stored and it is reported that a sound crushing will be made before spring sets in.

Developments in the lower adit are progressing with renewed vigor and the drift, which is being driven to intersect the rich shoot opened in the winze, is rapidly approaching its objective. As far as opened the vein shows high milling values. Manager H.L. Johnson states that a mill will be erected during the coming summer, and mining men familiar with the Tightner, expect the property to become one of the greatest gold producers in California. The developments of the past half-year have opened up extensive ore reserves, and the remarkable richness of the hulk of the ore insures splendid profits for the owners.

Johnson originally secured the Tightner for a few thousand dollars, and within a short time of taking charge uncovered ore that paid off all costs and left an excellent profit. Last summer a German syndicate made an offer of \$2,500,000 for the property, but Johnson refused to consider negotiations unless a cash payment in full was made at once. The Germans desired an option, but this was refused.

The Tightner has been developed to its present state by means of hand drills, but within a short time, a compressor will be installed and power drills operated. The recent introduction of electricity into the district marks a new epoch in the famous old field.

The strike recently made at the Red Star continues to show up splendidly and manager Woodbury is confident that the property is destined to become one of the foremost producers of the district. The ore shows the same value that marks the Tightner vein, and appears to be an extension of the famous Tightner-Rainbow vein system. Little attention is being paid to ore production at this time; the company is concentrating every effort on developments.

The Rainbow, Plumbago, and Bear Creek mines are maintaining an excellent production, and the twenty-stamp mill at the Plumbago are treating excellent ore, coming mainly from no. 4 adit where splendid ore is being stopped. This property is the largest producer in the district, and is a consistent dividend disburser. The Rainbow has maintained a steady yield throughout the year and enters upon 1911 with every promise of a profitable season.

**June 22, 2011**

The Rainbow, Red Star and Plumbago are under one ownership, Original Sixteen to One Mine, Inc. A map (1915) from our extensive inventory, details a mining history unlike any other of the earliest work and gold production in Alleghany. As Ray Wittkopp describes the richness of Sixteen to One, 'obscenely rich', early Tightner exceeds '*obscenely rich*'. The productive past area is not yet accessible but work began four years ago with the renovation of the zero level. A large block above the old workings exists.

## JEWELRY ROCK FROM RED STAR

*The following article was written 108 years ago, two months before our company was incorporated in San Francisco. Red Star (our most northern underground workings) is my favorite target; however it yielded to the million plus dollar development of the most southern workings in the late 1990's. The crew deepened a winze to cut through a fault proving that gold exists below the fault. Well, spot price took a dump and we discontinued developing this southern ore body.*

**Aug. 20, 1911**

**Recent developments prove richness of vein. J.M. O'Brien has taken over the Tightner and the Red Star and has already installed new machinery and equipment in order to push the work.**

George Scarfe Jr. superintendent of the Middle Yuba Hydro Electric Company, at Alleghany, Sierra County, on a visit to San Francisco to contract for electric motors to operate air compressors and other modern machinery now being installed in the Omega mine in that district. For which his company is to furnish power, reported having been shown some unusually large specimens of high-grade ore or "jewelry" rock similar to that of the Tightner, which was taken out this week from the lower works of the Red Star, which was recently taken over by J.M. O'Brien of San Francisco.

He has installed and has in operation a modern plant on the Tightner and has added the Red Star group to his holdings, which gives 5500 feet along the lode.

As the mine are now being developed with air drills driven by electric power, it is proposed to continue the lower tunnel through the Tightner ground, which has opened up the same shoot as

shown in the upper workings and has practically demonstrated that the ore body is continuous, or is a true fissure. And as the values in the Red Star have been proven within the past few weeks to be the same fissure, it is conceded by authorities that this should prove one of the large mines on the lode, as the lower tunnel will tap the Red Star at approximately 900 feet under its present workings. The site for the mill is completed and the building material is being erected. The machinery is being shipped in by the Nevada City Miner's Foundry as fast as completed

This, which has been one of the richest gold producing sections in California, has been neglected for some years on account of the lack of power, and the Middle Yuba Electric Company is now one of the most valuable utilities in Southern Sierra. Without which deep and extensive mining was impossible, and there was no question in the minds of those who know the geological formation of the district, that a fabulous shoot of ore which has been encountered in the Tightner, Red Star and other mines goes down with the veins, which are unquestionably of the true fissure varieties.

---

Question: what goes into your Risk Management assessment for investments? Do you have any assets in gold? If so, why? If not, why? Recent articles on our Company were published in the *International Mining Journal* (January and February 2020 issues) written by David Hughes.

**Raymond W. Wittkopp Consulting Geologist**  
**To: Michael M. Miller**

**Historic reports are priceless for the Sixteen to One mine. My conclusions, as well as those of others used in this report, are relevant today. You have my permission to offer this report to people interested in your current investment programs. Please note that in item 6, work was undertaken and resulted in the production of 1000 ounces of gold in a short drift below the 1500 level.**

**Subject:**

Observations, Conclusions and Recommendations for the Exploration of the Red Star Project.

June 18, 1993

The observations, conclusions and recommendation presenting in this memorandum are based on a review of the listed references, two tours of the workings and half a day spent discussing the project with Bill Fuller at his home in San Andreas, Calif. The meeting with Bill Fuller was held during November 1990. Access to the working, during the second tour, which was conducted on June 11, 1993 with Chuck Baird and Ian Haley, was by way of the 1500 level of the 16:1 Mine and the 1064 winze. As a result of this work, the following observations and conclusions were noted:

The Red Star property has had prior production of high grade. However, the amounts and exact locations where much of the ore was obtained are vague. It appears that the Yellow Jacket orebody produced 2,000 ounces.

According to Ayres, while sinking the Red Star winze: *"The vein was found in place at the 500 level and drifting began in both north and south directions. High-grade ore was immediately found in the work south of the shaft and approximately \$10,000.00 was hand mortared and shipped to the mint. The level was 200 feet toward the north line of the 16:1 mine and a few more bunches of high grade taken out."* Also, according to Ayres, *"At the 600 level a 50 crosscut was driven to cut the vein and development proceeded both north and south. About 250 feet south of the shaft a spilt in the vein was found and high-grade ore encountered. At the split, one branch took a course nearly due north and the other continued along the same course (N. 45 degrees W.), and gradually died out in the serpentine. High-grade ore was found along the latter branch at the split."* Ayres reports productions of \$60,000.00 for the Red Star workings.

Zucker shows that the area between the upward projection of the 1064 winze and a line trending east-west approximately 300 feet south of the Red Star property line produced 37,800 ounces of gold. High-grade pockets in this area and to the north in the Red Star mine have been smaller than those south of the Tightner shaft in the 'guts' of the 16:1 mine. The ratio of production to development work is not known for this property.

It appears that almost all of the production from this property is from the Tightner (16:1) vein. Some production probably came from the Red Star vein at its junction with the Tightner vein.

1. A large "pinch zone" has mapped within the lower southern portion of the project. Although high-grade has been found within pinch zones, production seldom pays for development work.
2. Bill Fuller feels that as a result of possible litigation the Red Star south boundary was not adequately explored. Although there appears to be a considerable stoping along the boundary, the property line goes through the Slusher stopes, his comment deserves consideration.
3. The junction of the Tightner vein and the Red Star vein has been accurately mapped and plotted. Portions of this junction have had production while other portions appear unexplored.
4. There is a very high probability that the Yellow Jacket orebody extends below the 1250. This could be confirmed by driving a south trending spur off of the 1584 raise and raising in the projected ore. Favorable alteration is present in the 1584 raise.
5. A number of individuals including myself have viewed the Tightner vein on the 1500 level in the Red Star area. It appears that below this level the vein is pinching and breaking up and is not a strong vein. Bill Fuller also mentioned his concern. This is not uncommon in the Alleghany district and usually the vein swells and can again gain considerable thickness. Bill among others recommends drilling in order to confirm continuity of the vein at depth.
6. I have reviewed the drill program designed by Chuck Baird, mine geologist, to test the Tightner vein below the 1500. The program is logical and well thought out.

7. I have observed the 120 feet on the 1500 level where OME reports describe the occurrence of coarse or speckled gold. Although the statement “120 feet of speckled gold” is a rather optimistic statement, there is some visible gold within this zone and the presence of visible gold is significant. This zone may represent the continuation of the Yellow Jacket or North orebody.
8. While touring the Red Star working, favorable structure and alteration often associated with the occurrence of high-grade were noted. A thick layer of talc was noted in the footwall of the vein in several areas. There is a negative correlation between occurrence and the presence of high-grade.
9. According to Austin, “The 350 foot level development consists of about 400 feet of drifting from the 350 foot west crosscut to the south boundary line of the Red Star. The vein, in schist, contacts the serpentine at two or more points on the 350 level. Its identity is somewhat obscured by this contact, but having been identified in the main west crosscut above the 350 foot level it would appear as if it may be following the schist serpentine contact from the 350 foot winze level to the original surface now covered by lava. The exposure of serpentine on the 350 foot level winze is of considerable importance, not only in identifying the downward extension of the Tightner vein from the main west level, but the bearing that it has on probable ore deposition.” The map that accompanies the Ayres report also shows quartz on the 350 level. A review of maps shows a large block of unexplored favorable ground between the Tightner 250 level, the Red Star 350 level, and the Tighter 1000 level.

Based on these observations and conclusions the following recommendations are made:

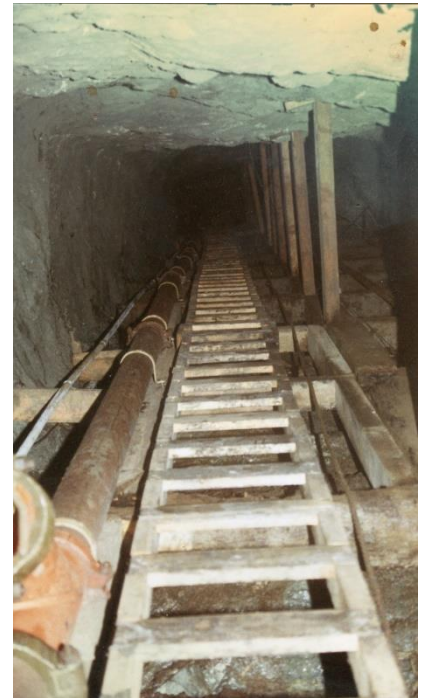
**Drive a southerly trending spur off the 1584 raise to explore the down dip projection of the Yellow Jacket orebody.**

1. Carefully study and extend the 1578 raise. Even though the vein is only 5 inches thick at the top of the raise, this is an important target

because it is close to the junction of the Red Star and the Tightner veins. When the junction is found, raise along it toward the 1250 level.

2. Drive three small raises into the 120 feet of vein with speckled gold to test for grade and continuity.
3. Commence with the Chuck Baird drill program to explore the Tightner vein below the 1500 level.
4. At the south end of the Red Star 500 level, raise along the projection of the junction of the Red Star and Tightner veins. Ayres states that, “the vein was faulted out”. Bill Fuller, however, recommends this work and I agree.
5. Within the southern portion of the 500 level, disseminated galena was noted within ribbon-banded quartz that also contained several clots of chalcopyrite. A very careful inspection of this area should be made for visible gold and if discovered, development work should be justified.
6. Do not explore within the pinch zone. Do not explore in areas where thick talc is found in the footwall of the vein.

The Red Star project has considerable merit. The targets on this property are worthy of exploration, however they should be evaluated with respect to other targets present on the 16:1 mine property. The targets with the least amount of risk and the highest potential of success should be developed first. I look forward to discussing this matter with you in more detail.



*Red Star Winze*

Respectfully submitted,

Raymond W. Wittkopp  
Geologist

## WILLARD P FULLER JR, AKA BILL FULLER

My first meeting with Bill took place in December of 1974. He was a former geologist for the mine and lived not far away in San Andreas, California. He seemed cautious or aloof or at the least very guarded with our conversations. Some people would confuse this attitude as gruff. Quickly, I learned that Bill took mining and the Alleghany Mining District very seriously. His caution in revealing facts, data and opinions represented his privacy and love for our way of life. Who is this young whippersnapper asking all about the Sixteen to One anyway, he was thinking.

Recently, our current geologist, Ray Wittkopp commented that Bill had that “Harvard arrogance”. It was said with respect and I knew what Ray meant. For five years three of our five directors had a Harvard education and Bill held one of those positions. I liked working with those Harvard mining guys. They taught me a lot.



1983

Bill always answered my letters. He was one of a handful of men with actual experience before the mine was left to flood around 1965. In 1987 I asked him if he would consider a position on our board and take a more active role in our management. He said yes and held that title until 1992. A most memorable piece of advice that Bill repeated was due to the nature of our high-grade gold mine. He said, “*Work out your plan. Do not flit about the mine going from one attractive spot to another. Stay focused but know when it is time to quit a heading.*” That advice remains true today.

Bill died last Sunday in San Andreas. Perhaps his greatest legacy for the mine and company will be the maps he left in our library. I say perhaps because we still have three targets he strongly recommended for mining a good pocket of gold. Oh, Bill, we will get to them, so stay in touch.

Maps, reports and other documents no matter when they were prepared influence us today; however the competence and reliability of the author is important. One of the most famous geologists was Reno Sales, world renown and associated with the Anaconda Company. He developed a technique of underground mine mapping and held classes. It was the Reno Sales/Anaconda School of Mapping and offered by invitation only. It was my pleasure to meet three of those graduates. Bill was the last living graduate of Mr. Sales’ unique and innovative method of mapping veins, wall rock and other important characteristics of a mine.

I remain very grateful for the trust and advice Bill offered me. He will be missed. Tap ‘er light, Bill.

*Written December 31<sup>st</sup>, 2009*

*Seventeen years ago our Company geologist wrote what you can read below. Spot Price in 2003 was \$343.80 per ounce. Today it is \$2,052.50. We also know much more about our Northern gold deposit. Ray was a hands-on geologist, a teacher and a man who walked from Reno to Alleghany over Henness Pass. He worked with moon rocks at University of California, Davis campus. I found his hand written report and want to share it with you. Send it along to those who believe gold is a worthwhile asset to own. Ray's thoughts are more relevant today for multiple reasons.*



Ray examining moon rocks at Kennecott Copper, 1968.

Alleghany, California, May 2, 2003. Michael M. Miller, President of Original Sixteen to One Mine, Inc., announces the company's intention to raise \$10 to \$12 million in order to develop the new Sixteen to One Mine and reposition the company into additional activities.

The new mine will be on company owned land north and along the strike of the present mine. The new mine will be accessed by a 375-foot shaft situated one mile north of the present 800 level portal to the old mine. "We have spent a lot of time and effort studying the area north of the existing mine and feel that this new area will have even greater production than the old mine", Miller said.

The Sixteen to One vein system is a premiere pocket mine where very rich concentrations of gold formed millions of years ago. Assays are measured in ounces of gold per pound of quartz. The old mine, which still produces high grade today, has produced well over a million ounces of gold. The largest concentration of gold was in a pocket containing 83,000 ounces. The physical area was 20 by 40 feet. Much of the present mine production is sold at a premium over the gold spot metal price as specimens and for jewelry. Demand significantly outstrips supply.

For the past two years the company has been working on the preparation of this project. Old company and government maps and reports have been reviewed. New maps and cross sections have been prepared. Former mine geologists and engineers were consulted.. All elevations have been reduced to one datum.

In the old mine, the largest concentrations of gold were found in the highest levels. In the new mine even higher levels concealed by ancient lava flows will be developed. By coincidence the shaft for the new mine will pass directly through one of the more productive portions of the Blue Lead tertiary gravel channel prior to encountering bedrock. The shaft is positioned between the famous Bald Mountain mine (purchased in 1940) and Smith's Flat, where the auriferous channel broke into the Alleghany ravine. Some initial production of gold is expected from this area.

"All available evidence supports this new shaft", Miller says. "As soon as we raise the money we will contract for its construction. The question is not if this will be a good mine, it is just how really great will it be." The Original Sixteen to One, Inc. was incorporated in 1911 and is the oldest United States gold mining corporation. Historical and contemporary information is available at [www.origsix.com](http://www.origsix.com).

## AHEAD OF THE CURVE

**July 6, 2011**

The American businessman, entrepreneur and miner were traditionally ahead of the curve. What curve? That curve would be the development of America's natural resources. We owe the high standards of our life, which have developed over three centuries to the wealth of our natural resources, the spirit of our countrymen and the hard work of those who find, harvest and deliver natural resources to the cities and rural areas of the United States. America used to be ahead of the curve, a leader in bringing new wealth to everyone in our societies.

Even the most global or radical people wishing or working to eliminate the exploitation of America's natural resources contradict themselves with their attitude to stop all mining, logging, fishing or other natural resource productivities. They advocate these suspensions without a comment on the facts that globally, people must have natural resources because natural resources are the base and foundation of life. These advocates are short sighted. America has exceeded in writing regulations to protect natural resources while much of the rest of the world containing rich useful natural resources lag far behind. Alleged rape of the earth is greatest outside America where extraction exceeds enforcement not in America where enforcement exceeds extraction.

Why do I mention the Sixteen to One as an example? With not only a strong demand for gold but also a commercial need for gold, financiers, capitalists, investors and businessmen ignore this world-class gold deposit.

Philanthropists should be added to the preceding list. America is losing more than the use of its abundant, local, natural resources. The culture of logging and mining is endangered as well. Young men with the vigor of spirit and the body and mind to work in an underground mine or forest filled those jobs. If America tosses these jobs aside now, it also tosses the wellbeing of many young men. Few "old hands" will be around to train the youth of the 2020's on the unique skills required to bring resources to the American marketplace efficiently and responsibly. I may not be here to see it but I know it will happen. I arrived to California's goldfields in 1974 and benefited from the words and actions of the "old timers".

For our preservation, protection and wellbeing, including our world class, high standard of living, America should recognize the God given abundance within these independent and United States. They are placed here for our constructive use.

Countries in South America, Asia and Africa are now ahead of the curve due to the interests of financiers, capitalists, investors and businessmen in the exploitation of their natural resources. They also lead the environmental destruction cause by unregulated extraction industries. America is on the trailing edge. What should Americans do about this?

## HIGH GRADE POCKET CHART

California's largest high-grade pockets were mined in the Alleghany Mining District. State Geology Bulletin 193 published the following chart. Two recent discoveries are added. The total value was calculated using the historical price of \$20.67 per ounce. The highest pocket at today's price would be \$27,800,000.

Of the twenty-five pockets listed, twelve came from mines owned by the company and sixteen are from Alleghany. Few gold companies and gold mines have ever witnessed the uncovering of such concentrated riches.

	LOCATION	DISTRICT	DATE	VALUE
1.	Original 16 to 1 Mine	Alleghany	1920s	Nearly \$2 million
2.	Original 16 to 1 Mine	Alleghany	1920s	Nearly \$1 million
3.	Original 16 to 1 Mine	Alleghany	1930s	\$750,000
4.	Oriental Mine	Alleghany	Pre-1890	\$734,000
5.	Alhambra Mine	Spanish Flat	1939	\$550,000
6.	Four Hills Mine	Sierra City	1860s	\$250,000/\$500,000
7.	Tightner Mine (now part of the 16 to 1)	Alleghany	1912	\$375,000+
8.	Tightner Mine (now part of the 16 to 1)	Alleghany	1904	\$375,000
9.	Keltz Mine	West Point	1860s	\$300,000+
10.	Bonanza Mine	Sonora	1879	\$300,000
11.	Original 16 to 1 Mine	Alleghany	1995	\$225,000
12.	Original 16 to 1 Mine	Alleghany	1920-1950	Several yielding about \$200,000 each
13.	Kate Hardy Mine	Alleghany	1948	\$200,00
14.	Original 16 to 1 Mine	Alleghany	1993	\$135,000
15.	Rainbow Mine (now part of the 16 to 1)	Alleghany	1881	\$116,000

Three additional mines in the top 25 are now part of Original 16 to 1 Mine:

Red Star Mine	Alleghany	1870s	\$80,000
Ophir	Alleghany	1872	\$75,000
Plumbago	Alleghany	1920s	\$60,000

Original Sixteen to One Mine, Inc. current properties produced 251,137 ounces of gold in twelve (12) pockets. Today's spot price per ounce is \$508,050,150. Historical total production of total mined from its properties is \$2,260,000,000, over two billion dollars.

*John Muir is embraced by historians, naturalists and others as a man of great sensitivity and awareness and vision. One group extols his virtues to validate their narrow view punctuated with dogmatic arrogance. That group would be the environmentalist. John Muir has become their definitive authority, the one unquestionable figure that really speaks for the Californian environment.*

Here is what John Muir, an important American, had to say in 1894. These are his words.

“...the people and the region beyond the camp furnish mines of study of never-failing interest and variety. When I discovered this curious place, I was tracing the channels of the ancient pre-glacial rivers, instructive sections of which have been laid bare here and in the adjacent regions by the miners. Rivers, according to the poets, “go on forever”; but those of the Sierra are young as yet and have scarcely learned the way down to the sea; while at least one generation of them have died and vanished together with most of the basins they drained. All that remains of them to tell their history is a series of interrupted fragments of channels, mostly choked with gravel, and buried beneath broad, thick sheets of lava. These are known as the “Dead Rivers of California,” and the gravel deposited in them is comprehensively called the “Blue Lead.”

The importance of these ancient gravels as gold fountains is well known to miners. The hills have been cut and scalped, and every gorge and gulch and valley torn to pieces and disemboweled, expressing a fierce and desperate energy hard to understand. **Still, any kind of effort making is better than inaction, and there is something sublime in seeing men working in dead earnest at anything, pursuing an object with glacier-like energy and persistence.**

Most of the pioneer miners are sleeping now, their wild day done, while the few survivors linger languidly in the washed-out gulches or sleepy village like harried bees around the ruins of their beehive. “We have no industry left now,” they told me, “and no men; everybody and everything hereabouts has gone to decay. We are only bummers—out of the game, a thin scatterin’ of poor, dilapidated cusses, compared with what we used to be in the grand old gold-days. We were giants then, and you can look around here and see our track.” But although these lingering pioneers are perhaps more exhausted than the mines, and about as dead as the dead rivers, they are yet a rare and interesting set of men, with much gold mixed with the rough, rocky gravel of their characters; and they

manifest a breeding and intelligence little looked for in such surroundings as theirs. As the heavy, long-continued grinding of the glaciers brought out the features of the Sierra, so the intense experiences of the gold period have brought out the features of these old miners, forming a richness and variety of character little known as yet. The sketches of Bret Harte, Hayes, and Miller have not exhausted this field by any means. It is interesting to note the extremes possible in one and the same character: harshness and gentleness, manliness and childishness, apathy and fierce endeavor. Men who, twenty years ago, would not cease their shoveling to save their lives, now play in the streets with children

Mines, morals, politics, the immortality of the soul, etc., were discussed beneath shade trees and in saloons, the time for each being governed apparently by the temperature. Contact with Nature, and the habits of observation acquired in gold-seeking, had made them all, to some extent, collectors, and, like wood-rats, they had gathered all kinds of odd specimens into their cabins, and now required me to examine them. They were themselves the oddest and most interesting specimens.

Fresh beauty opens one’s eyes wherever it is really seen, but the very abundance and completeness of the common beauty that besets our steps prevents its being absorbed and appreciated. It is a good thing, therefore, to make short excursions now and then to the bottom of the sea among dulse and coral, or up among the clouds on mountaintops, or in balloons, or even to creep like worms into dark holes and caverns underground, not only to learn something of what is going on in those out-of-the-way places, but to see better what the sun sees on our return to common every-day beauty.”

*John Muir might not approve of freeways, shopping malls covering the earth, cell phones competing with the chattering of birds or other cultural evolutions scattered through the Sierra Nevada landscape; however, according to his own handwriting, he would praise and encourage the old and dignified industry of California gold mining, mining as we do at the Sixteen To One mine. John Muir, this master of the Californian environment, recorded for posterity his feelings about life, nature and the gold fields of the Sierra, “Still, any kind of effort making is better than inaction, and there is something sublime in seeing men working in dead earnest at anything, pursuing an object with glacial-like energy and persistence.”*

## THE RAINBOW MINE

A reply to Bernstein's book *The Power of Gold*.

March 10, 2011

*"From the ancient fascinations of Moses and Midas through the modern convulsions caused by the gold standard and its aftermath, gold has led many of its most eager and proud possessors to a bad end. Gold had them, rather than the other way around. Such is the power of gold."* Peter L. Bernstein, author.

Humanity has an obsession with gold: monarchs and money-sayers, potentates and politicians, men of legendary wealth and others of more plebeian beginnings from all continents. It dates back 6.000 years.

Bernstein's next to last sentence caught my eye: *"Gold had them, rather than the other way around."* I entered the gold industry in 1974. Business writers identified a serious gold illness, gold fever. Gold advocates were belittled as nut cases. Why is it today, most men of legendary wealth, side-step gold as an asset worth holding? I have no ready answer, just some ideas: buying it with cash provides little challenge or adventure. Bulging bank accounts or bloated stock portfolios represent power. The ego says, "I am successful in what I know and know enough to not get serious about investments that I do not control or know (gold). I sail, race ponies, buy gadgets, collect stuff or gamble for sport, which satisfies the hunger for challenge, risk and reward."

Here is a fresh picture for you, the men of legendary wealth and those of more plebeian beginnings. Consider mining gold for its challenges, adventure, fun and profit. Keep as much as you can afford (in other words, sell only what is needed for a cash flow). Avoid projects with doubtful prospects of permitting and operating at a profit. Be honest in your approach because real men of gold mining want to be honest as well rich. Accept a new challenge. It is good for your brain. Think of others or the social benefits your gold mining plan fuels: blue collar jobs, especially for the young, new wealth spreading to small businesses and joy to dreamers. Your financial support also helps America.

A list of underfinanced companies, like Sixteen to One, is short. We own the heart of the rich and proven Alleghany Mining District. One mine, the Rainbow Mine lies idle. Original Sixteen to One Mine, Inc. wants it operating and is willing to talk deals. At \$20.67 an ounce of gold, the Rainbow recorded \$2,000,000 in production prior to WWII. Except for an exploration 'sortie' in the 1990's it has received little attention. It has the history to make it a top contender for the men of legendary wealth and others interested in participating in the obvious bull market for gold that is underway.

One will ask, *"Why doesn't the Sixteen to One open it up if it has such a great history?"* Good question with a good answer. Our company lacks the financial resources required for success but believes the time to expand is now. The future for gold is bright.

Peter Bernstein closes his enlightening book, *"The Power of Gold"* as follows: "Those who believed that gold was a hedge against the uncertainties of life failed to understand that the pursuit of eternity is not to be satisfied by gold, or by anything else we choose to replace gold—dollars, euros, what else. Gold as an end in itself is meaningless. Hoarding does not create wealth. Gold and its surrogates make sense only as a means to an end: to beautify, to adorn, to exchange for what we need and really want.

*When asked to prepare a vision for the Sixteen to One years ago, I did. The original analysis was written in the Fall 2007. Investors from Silicon Valley figured it was timely to look into gold and called me. They called us a 'trailing edge business'. They considered theirs 'leading edge ventures'. These were new terms to me. The point man wanted a SWOT paper (strength-weakness-opportunity-threat), also a new concept. He asked, "What is your vision for this old company and mine?" I searched my soul and wrote the following. Everything came to a halt with events of 2008 dropped on America. The vision rings more relevant now.*

## WHAT'S IN ITS FUTURE A VISION

**The vision for Original Sixteen to One Mine, Inc. (the Company) includes** America's natural resources but focuses on the plentiful natural resources of California. While the vision may appear to be rather explicit or narrow, it includes gold and other mineral products, timber and water. It encompasses their utilization, management, development and marketing for maximum yield. No other public reporting company incorporated in the United States shares this focus.

This vision includes the social aspects of natural resources and the desperate need to protect the cultural as well as the physical environment of our precious natural resources. The Company combines all social sciences as well as most physical sciences into an operational program. It is an enlightened business plan of operation. The Sixteen to One's past reveals a necessary approach of maintaining long-term assets with the short term needs of producing revenue. Its present status is demonstrative proof that a small natural resource company has survived the demands of natural resource utilization in today's overly aggressive pro environmental outlook.

The Company will become known as the model for future natural resource development in California and the United States. Its operations will challenge the erroneous myths and prejudices of well-meaning activists who hinder the sensible extraction of our natural wealth. These beliefs have turned the omnipresent demands for raw materials to natural resource production in other parts of the world, a dangerous reality.

A primary ingredient for our vision and subsequent model to expand is an infusion of working capital. There has been a noticeable lack of interest from Wall Street or private investors in forest and mineral production. The modest attention of the stock market towards America's natural resource companies hurts future generations both in the United States and the world. Some patterns of investment are predictable. Investors' interest in specific industries continues to move from one sector to another. The Gold Sector is abstruse, removed from the usual way of thinking and difficult to comprehend. The forest industry follows closely in its mystic.

A movement into natural resource ownership or participation is overdue. Unlike banking, savings and loan institutions, automobiles, real estate, airlines, pharmaceuticals, computers, utilities and practically every part of the complex mixture of America's democratic capitalism, the natural resource companies are ignored. Perhaps one simple answer is that resource companies believe they must stay under the radar to function in today's hostile anti-mining/anti-logging mentality. Perhaps a more likely reason is the pure misunderstanding that potential investment capital has about these small but vital industries.

The Company's dream foresees an awakening of Americans to the realization that we need and will benefit from a return to domestic natural resource productivity. For almost fifty years America has been bombarded with media blame for past degradation to the environment. Some of the blame is justified. Many extraction and harvesting methods, however, are no longer practiced and cannot be assumed as what to expect from future operators.

American industries have learned from the past and clearly are the most environmentally sensitive operators in the world. This is one reason to bridge the ignorance gap of the population and our leaders. The "not-in-my-back-yard" position is a short-sided myth! Vital and necessary minerals and other resource products come from countries without the sensible regulations that have evolved in the United States over the past hundred years. The consequences of this are global.

Even though population growth and physical development exploded during the twentieth century, the world-changing role of the United States has taken a more dramatic turn. A counter cultural shift emerged. America was considered the can-do country. Democratic and capitalistic social ideologies opened the doors for an expanding middle class, especially from workers identified as "blue collar". Our natural resources were developed and accessible. What changed?

Somewhat reluctantly America became a world power and responsible leader. The blue-collar worker of today is losing economic ground as our society turns more and more to the service industries. But the need for manufacturing contemporary products in America remains; and in order to produce, industry requires raw materials.

America has them in abundance. America also needs the backbone of its labor resources to insure our freedoms.

**Notes Forward:**

The time has come to broadcast how to treat our inherited resources in the 21<sup>st</sup> century. Original Sixteen to One Mine, Inc., a US corporation, has all the pieces to lead this renaissance except one. That missing ingredient is explained in its Executive Summary. The oldest American mining corporation operating needs a grubstake to turn its dream into a reality. It will celebrate a 100-year, centennial birthday in October 2011. Happy Birthday America! On July 4, 2011, the land that we appreciate and love is 235 years old.

More years have passed. Time for testing this vision is overdue. Those external events beyond control have raised no new weaknesses or threats to our Gold Mining Company. The opportunities are greater for our company to prosper. In addition to our exploration program and maintenance underground work, our lack of adequate working capital must be solved. This is my main focus until miners blast into another pocket of gold.

---

**Updated:** July 4, 2019. A major constant over the twelve years of preparing for adequate working capital is the gold, gold mined from our properties. What we mined was invested in serious infrastructure that will access three certain targets. For me, however, the future is now. Similar external events present the greatest reasons for gold investment since the 1970's, (prior to December 31, 1974) when ownership and price controls by federal legislation were lifted and a free market emerged.

*The following analysis combines internal and external aspects of the Company. Strengths and weaknesses capture internal examples. Opportunities and threats reflect external considerations. Initiated in 2007 at request of Silicon Valley venture capital parties, events of 2008 extinguished presentations. It remains accurate in 2020.*

### **STRENGTHS**

- Natural Resources (Timber Water, Gold, Crushed Rock Minerals)
- Monopoly of natural product (quartz and gold gemstone)
- Toxic material handling
- Environment acceptance
- Historical gold production and profit
- Strong geology supporting future gold production
- Mining historical and cultural value
- Positive local government and public support
- Museum (501c3)

### **WEAKNESSES**

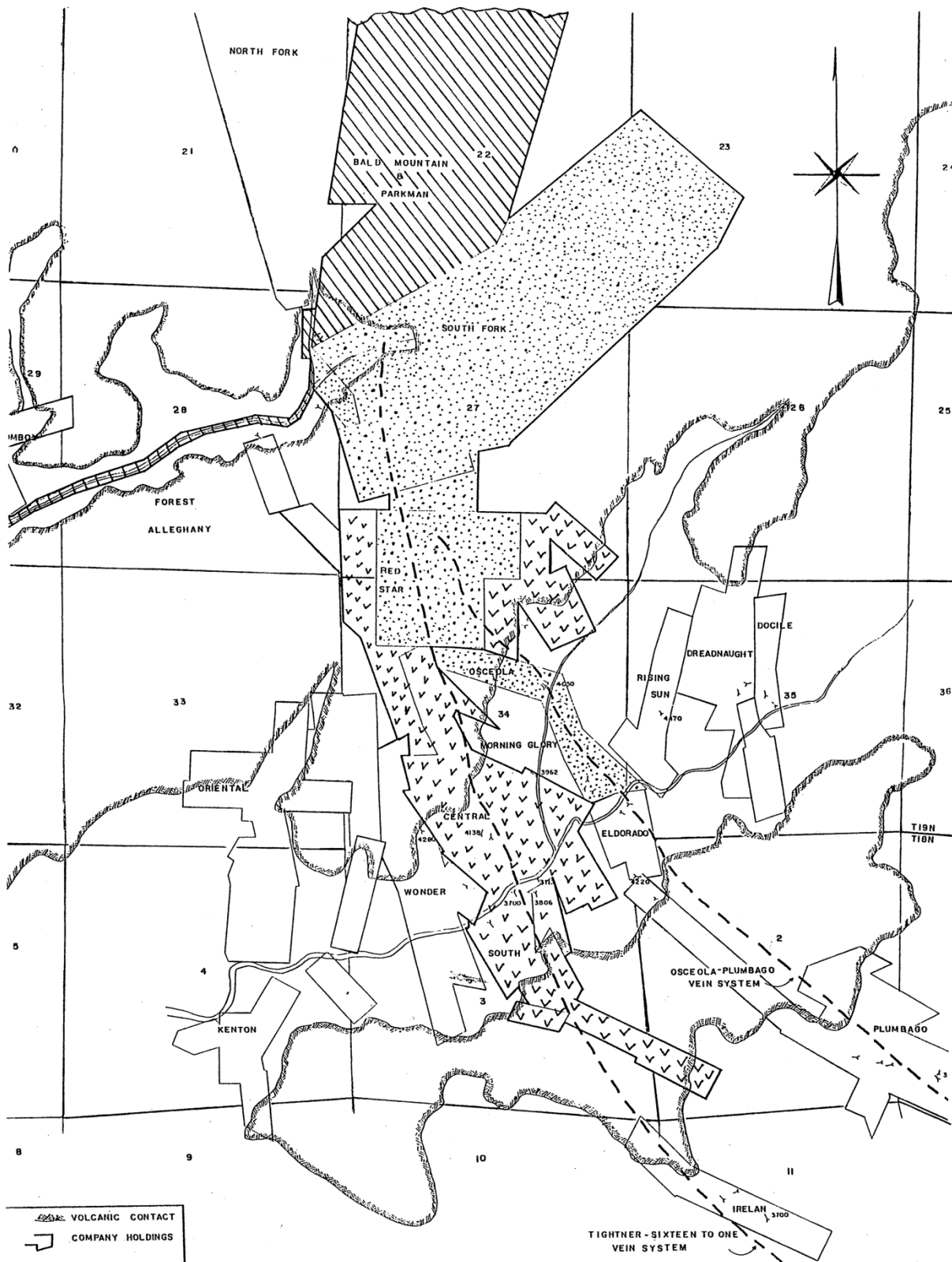
- Insufficient working capital
- Lack of workforce
- Unpredictable revenue stream
- Restricted trading market for stock
- Lack of general investor interest in Gold Sector






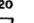
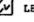

### **OPPORTUNITIES**

- Participation in ‘Gold Bull Market’
- Natural resource exploitation
- Participation in new outlook towards forest management
- Media and entertainment venue and products
- Natural and organic cosmetics for men and women
- Hydropower and bottled drinking water
- Vision uniqueness
- Cultural and social impact
- Baby boomer interest in related areas
- Recreation and tourism

### **THREATS**

- Increasing government regulations
- Reduction in market demand
- Size of market
- Extreme increases in utility and supplies costs
- Unknown government regulations
- Inability to secure sustainable financial backing
- Fire exposure



-  VOLCANIC CONTACT
-  COMPANY HOLDINGS
-  PORTAL
-  USGS ELEVATION
-  SECTION
-  LEASED TO KANIKA CREEK JOINT VENTURE
-  RED STAR/OSCEOLA PROJECT
-  BALD MOUNTAIN - FOR LEASE

**ALLEGHANY & FOREST MINING DISTRICTS**  
**LOCATION OF MINING CLAIMS**

0 800 1600

ORIGINAL SIXTEEN TO ONE MINE, INC. 1986

Compiled from company maps by J-R.



UPPER LEFT:  
“Hand of Dan”  
Mined on March 29th,  
2019 and weighing in  
at 21 ounces of fine  
gold, it is one of  
several specimens  
from the Red Star  
Mine, owned by the  
Original Sixteen to  
One, Inc.

MIDDLE:  
Underground tours are very  
popular! Lasting about 4  
hours and following the same  
routine as the miners, the  
tour is exceptional.



LOWER LEFT:  
Miners set up to drill a target  
below the Northern 1000  
level in Red Star ground.



**THERE IS A LONGSTANDING TRADITION IN JAPAN KNOWN AS KINTSUGI OR "GOLDEN JOINERY" WHERE BROKEN POTTERY OR CERAMIC IS REPAIRED BY GLUING THE PIECES BACK TOGETHER WITH MELTED GOLD. AS A PHILOSOPHY, IT TREATS THE BREAKAGE AND REPAIR OF THE OBJECT AS PART OF IT'S HISTORY RATHER THAN SOMETHING TO BE DISCARDED OR DISGUISED.**

**HERE AT THE SIXTEEN TO ONE, WE'VE DONE THE SAME FOR OVER A HUNDRED YEARS, ADDING MORE AND MORE HISTORY EVERY TIME.**